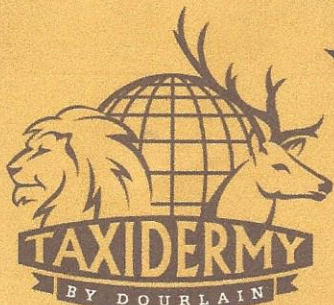
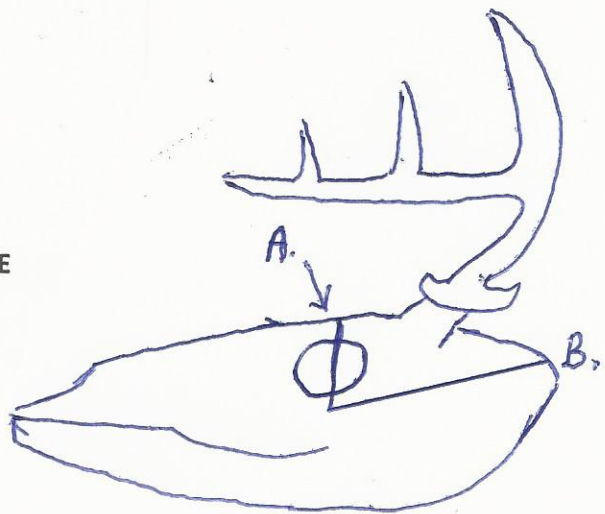
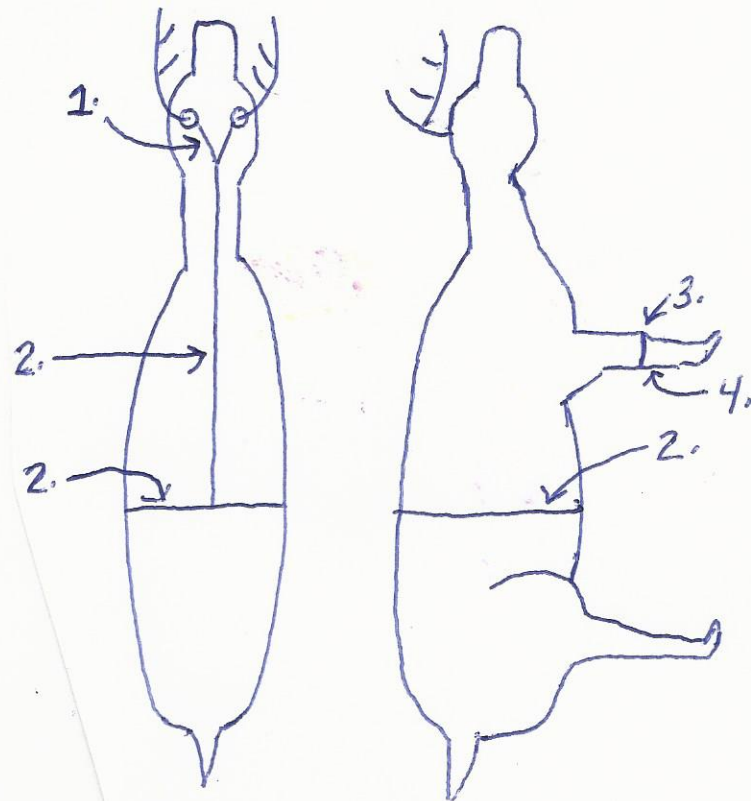


ANY ANTLERED ANIMAL CAPE SKIING INSTRUCTIONS

1. START BY MAKING A Y CUT ON TOP OF SKULL BETWEEN ANTLERS AND BASE OF SKULL.
2. CUT FROM BASE OF Y CUT DOWN CENTER OF SPINE TO BACK OF RIB CAGE. CUT HIDE COMPLETELY AROUND ANIMAL BEHIND RIBS.
3. CUT FRONT LEGS OFF AT KNEE JOINTS.
4. CUT DOWN BACK OF FRONT LEGS STRAIGHT DOWN BODY (WHERE BROWN HAIR INTERSECTS WHITE HAIR AT BOTTOM OF CHEST AREA) TO CUT LINE AT BACK OF RIBS.
5. REMOVE SKIN UP TO BASE OF SKULL, CUT EARS OFF WHERE THE EAR CANALS JOIN SKULL
6. CUT HEAD OFF ANIMAL AT BASE OF SKULL
7. SKIN AROUND ANTLER BASES IN AN UPWARD CUTTING MOTION BEING CAREFUL TO REMOVE ALL SKIN UP TO BASE OF ANTLER.
8. SKIN DOWN FACE OF DEER LEAVING ALL EYE LIDS AND TEAR DUCTS ATTACHED TO HIDE.
9. SKIN DOWN FACE BEING CAREFUL NOT TO CUT HIDE.
10. CUT OFF END OF NOSE AT CARTILEDGE AND SKIN DOWN UPPER AND LOWER JAW REMOVING ALL LIP MATERIAL TO REMAIN ON HIDE.
11. IMMEDIATELY FREEZE OR SALT SKIN TO PREVENT HAIR SLIPPAGE.

SKULL PREP

12. SAW SKULL AS SHOWN (SAW A THRU EYE SOCKETS SAW B THRU BACK OF SKULL)
13. REMOVE SKULL CAP
14. REMOVE ALL FLESH, BRAIN MATTER AND CARTILEDGE SKULL.



David Ratliff
President

Tel: (810) 564-3142
Fax: (810) 564-3143
Cell: (517) 304-5840

14510 N. Saginaw Rd.
Clio, MI 48420
Email: dave@dourlain.com
Web: www.dourlain.com